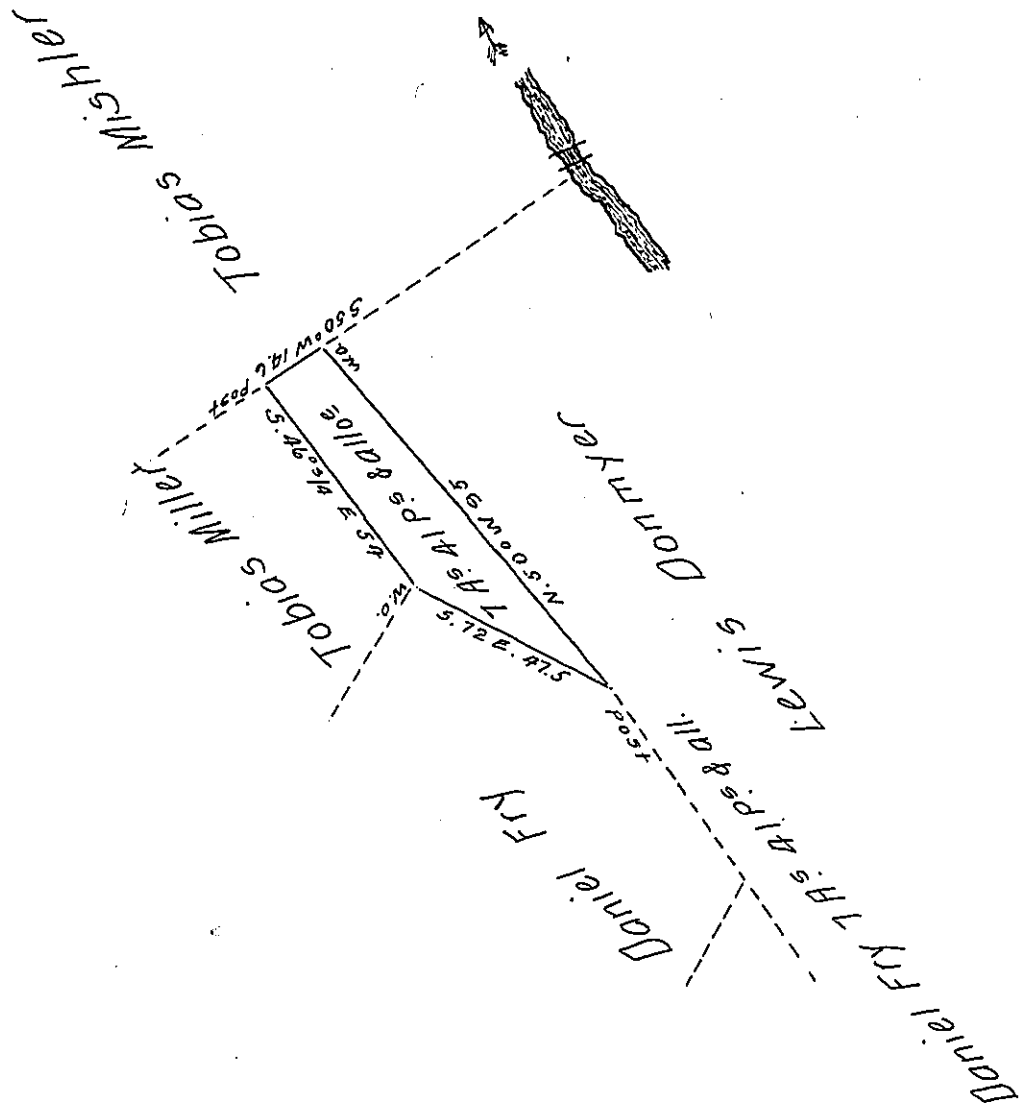


FORM No. 1.



Situate near Stony creek, in Conemaugh Township, Somerset
 County, Surveyed March 30th 1857, & returned May 19th 1857, in
 pursuance of a Warrant, dated the 25th day of Febrary A.D. 1857

To John Rowe Esq. } per Josiah P. Walker D.S.
 Surveyor General }

IN TESTIMONY that the above is a copy of the original remaining on file in
 the Department of Internal Affairs of Pennsylvania, made
 conformably to an Act of Assembly approved the 16th day of
 February 1833, I have hereunto set my hand and caused
 the Seal of said Department to be affixed at Harrisburg,
 this twenty third day of January 1908.

Henry Horck
 Secretary of Internal Affairs.